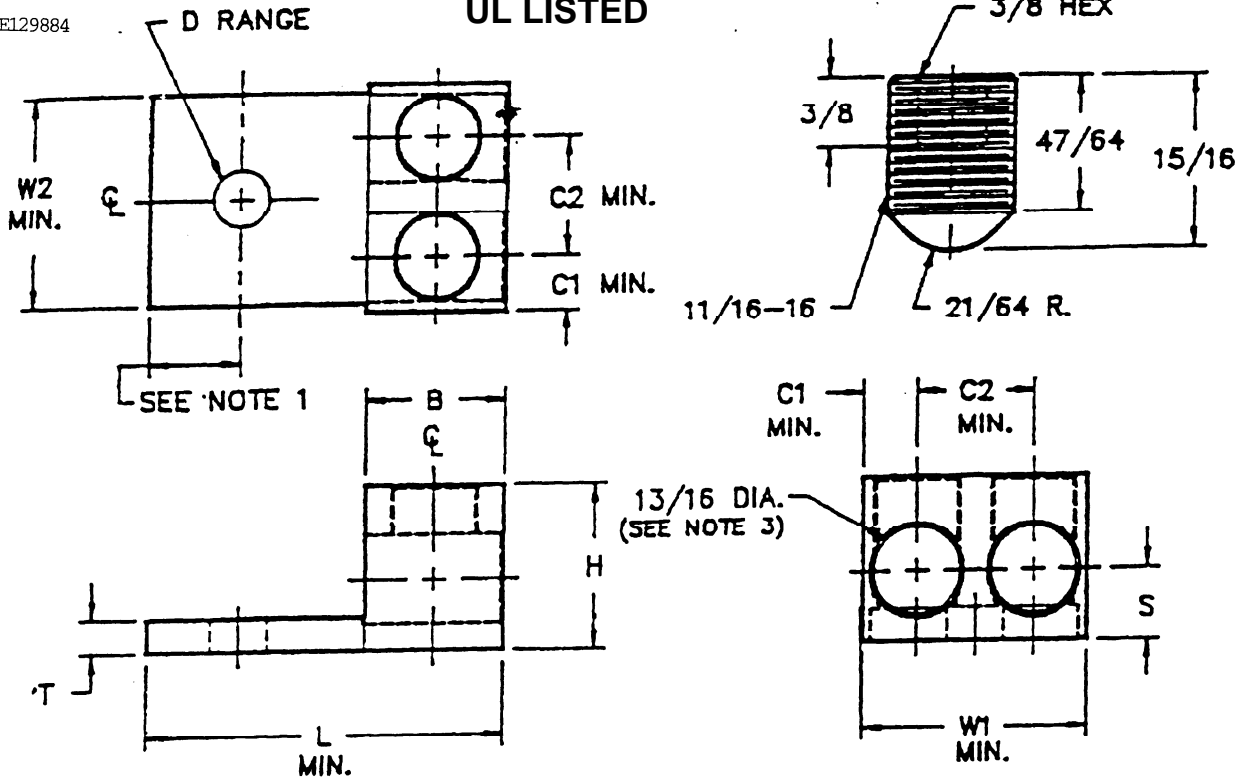


File EI29884

UL LISTED



STYLE	L	H	W1	W2	T	B	S	C1	C2	D RANGE
1.	2-7/8	1-1/4	2-3/64	1-47/64	1/4	1-1/8	5/8	1/2	1-1/16	3/8-5/8
2.	2-7/8	1-1/4	1 59/64	1-47/64	1/4	1-1/8	35/64	15/32	1	3/8-5/8

PARTS ARE:

1. MARKED: IH LOGO* 2S350 350MCM-6 CU9AL (UL) CU AL (SA)
2. ALUMINUM ALLOY 6061-T6
3. TIN PLATED

NOTES:

1. MOUNTING HOLE SHAPE AND LOCATION MAY VARY AND MAY BE THREADED.
2. SCREWS ARE ALUMINUM (2011-T3) TIN PLATED & WAX DIPPED.
3. FOR STYLE (2) USE 3/4 DIA.

*PER DRAWING 12380

INTERNATIONAL HYDRAULICS
INCORPORATED

TITLE

2S350

DWG. BY	JDB	DATE	7-13-99	DRAWING NO.	14136	REV.	
CHK. BY	NHS	SCALE					

THIS DRAWING AND DESIGN ARE THE PROPERTY OF INTERNATIONAL HYDRAULICS INC., CLEVELAND, OHIO, AND MAY NOT BE DUPLICATED, USED FOR BASIS OF DESIGN OR MANUFACTURE WITHOUT THE WRITTEN PERMISSION OF INTERNATIONAL HYDRAULICS INC., CLEVELAND, OHIO.