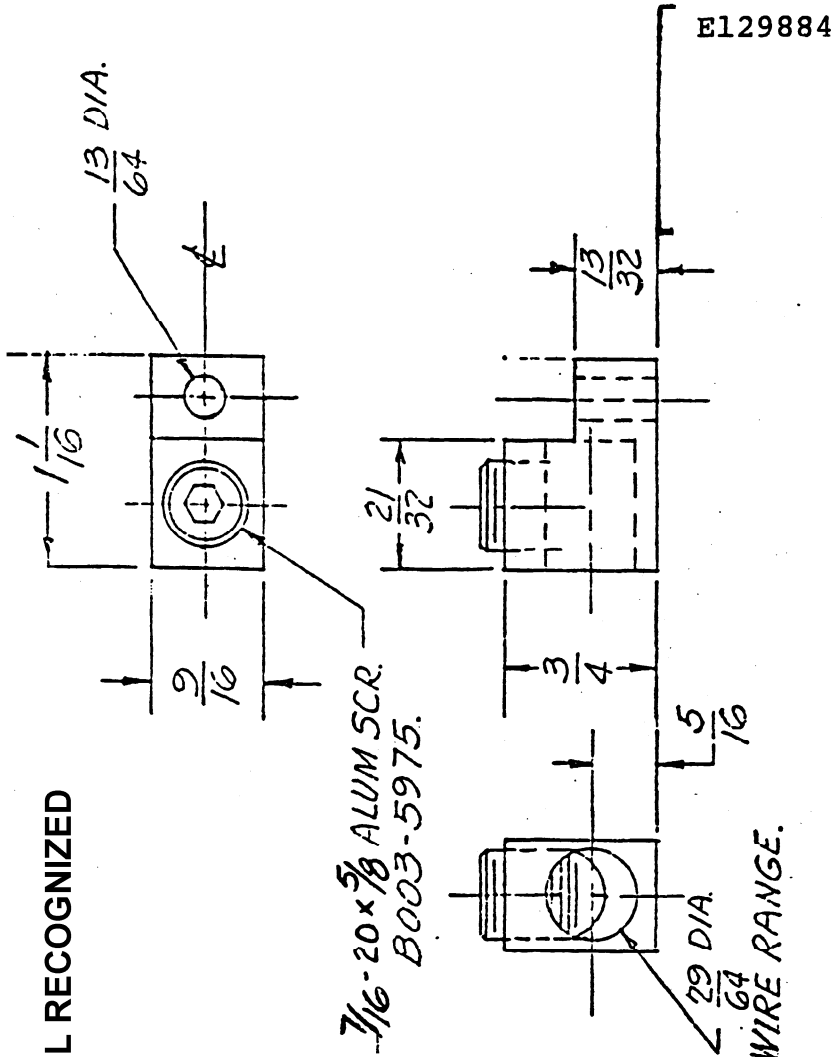


UL RECOGNIZED



SPECIFICATIONS:

1. WIRE RANGE: 2/0 - #8 AWG
2. MUST MEET UL486B REQUIREMENTS FOR COPPER AND ALUMINUM CONDUCTORS
3. FINISH: TIN PLATE 0.0001 IN. MIN. OVER COPPER FLASH
4. MARK WITH:
 - 4.1 IDENTIFICATION
 - 4.2 PART NUMBER (5201-L)
 - 4.3 WIRE RANGE
 - 4.4 AL7CU
5. SCREW: ALUMINUM ALLOY, 3/16 - 20 x 5/8, RECESSED HEX DRIVE 3/16 ACROSS FLATS (SEE B003-5975)

5201-L

| CHANGE NO. | REVISIONS | DATE | APP. BY |
|------------|-----------|------|---------|
| | | | |

| | |
|---------------------------------------|--------------|
| TITLE: CONNECTOR, WIRE (2/0-8 AL7CU). | |
| MATERIAL: 6061-T6 ALUMINUM | |
| FINISH: SEE NOTE 3 | DATE: 7-1-82 |
| DRAWN BY: R VLADUSICH | SCALE: FULL |